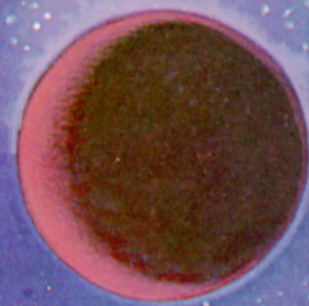


**THE HITCH-HIKER'S GUIDE
TO THE GALAXY**
part one





THE HITCH-HIKER'S GUIDE TO THE GALAXY / PART ONE by Douglas Adams

An epic adventure in time and space, including some helpful advice on how to see the Universe on less than 30 Altairian dollars a day.

Side One

In which the Earth is unexpectedly destroyed and the great hitch-hike begins. . .

Side Two

After being saved from certain death during the demolition of the Earth, Arthur Dent now faces a hopeless choice, between meeting certain death in the vacuum of space or finding something pleasant to say about Vagon poetry. . .

Side Three

After being improbably rescued from certain death in the vacuum of space, Arthur Dent and his new companions now face a missile attack and certain death. . .

Side Four

It has been revealed to Arthur that the Earth has been built by the Magratheans and run by mice. Meanwhile, his companions have other problems to contend with (probably, certain death).

Cast:

Simon Jones	Arthur Dent
Geoffrey McGivern	Ford Prefect
Mark Wing-Davey	Zaphod Beeblebrox
Stephen Moore*	Marvin, the Paranoid Android, and also the Whale, the Barman, Benji Mouse, Shooty and Gag Halfrunt.
Cindy Oswin	Trillian, and Computer Operator
Richard Vernon	Slartibartfast
Valentine Dyall	Deep Thought
David Tate	Eddie, and also Majikthise, Radio, Computer Operator, Frankie Mouse.
Jim Broadbent	Vroomfondel, and Bang-Bang
Bill Wallis	Vogon Captain and Mr. Prosser
and	
Peter Jones	as The Book

*Stephen Moore is a Notional Theatre player

Producer: **Geoffrey Perkins**

Associate Producer: Tim Souster

Executive Producers: Laurence Aston & Donald Mousseau

Engineer: Adrian Sear

Music composed and played by Tim Souster

Special effects and additional music by Paddy Kingsland

"Journey of the Sorcerer" by Bernie Leadon, arranged by Tim Souster

Based on the BBC Radio 4 series.

Recorded in July and August 1979 at Sound Development Studios

Sleeve art adapted by Margot Core

Cover illustration by Peter Cross

Inner cover graphics by Ian Wright

The Hitch Hiker's Guide to the Galaxy is available in hard cover from Crown Publications and in soft cover from Pocket Books.

SOME INFORMATION WHICH MAY CONFUSE YOU:

The Hitch Hiker's Guide to the Galaxy itself has not been published on this planet.

It is not, in the long term, a viable financial proposition.

In the long term, nothing on this planet is a viable proposition for reasons which the contents of this record album should make clear.

If you wish to avoid the events on this album, this is what you should do:

- 1) Leave the Earth as quickly as possible.
- 2) Do not procrastinate.
- 3) Do not panic.
- 4) Do not take the Whole Earth Catalog.

How to leave the planet:

- 1) Phone N.A.S.A. (tel: 713-483 0123). Explain that it's very important that you get away as quickly as possible.
- 2) If they do not cooperate, then try to get someone at the White House (tel: 202-456 1414) to bring some pressure to bear on them.
- 3) If you don't get any joy out of them, phone the Kremlin (ask your overseas operator to connect you to 0107-095-295-9051) and ask them to bring a little pressure to bear on the White House on your behalf.
- 4) If that too fails phone the Pope for guidance (tel: 011-39-6-6982).
- 5) If all these attempts fail, flag down a passing flying saucer and explain that it's vitally important that you get away before your phone bill arrives.

Although The Hitch Hiker's Guide to the Galaxy itself has not been published on Earth, stories concerning the Guide have been circulated under that title.

These first began to appear as a series of BBC radio programs in England in March 1978. The first series consisted of six programs, of which this double record album represents the first four.

These are not the recordings which were originally broadcast, but wholly new recordings of substantially the same scripts.

This is for complex reasons of copyright.

If you wish to understand these reasons, then you should first limber your brain up on a little gentle quantum theory. Work out on Relativity. Try to pump up a Unified Field Theory. Take a short cooling rest. Now you should be ready to tackle copyright law, but probably are no longer interested in it.

Later that year, one more episode was recorded and broadcast, commonly known as the Christmas episode. It contained no reference of any kind to Christmas. It was called the Christmas episode because it was first broadcast on December 24th, which was not Christmas day.

After this, things began to get increasingly complicated.

In the fall of 1979, the first Hitch Hiker book was published in England, called The Hitch Hiker's Guide to the Galaxy. It was a substantially expanded version of the first four episodes of the radio series.

At roughly the same time, this double album was first released, which was a slightly contracted version of the first four episodes of the radio series.

In January 1980 five new radio episodes of The Hitch Hiker's Guide to the Galaxy were broadcast on the BBC, bringing the total number of episodes to twelve.

In the fall of 1980 the second Hitch Hiker book was published in England. It was a very substantially reworked and re-edited version of episodes 7, 8, 9, 10, 11, 12, 7 and 8 (in that order) of the radio series of The Hitch Hiker's Guide to the Galaxy. In case this seemed too straightforward, the book was called The Restaurant at the End of the Universe.

At roughly the same time, a second record album was made, featuring a heavily rewritten version of episodes 5 and 6 of the radio series. This record album was also called The Restaurant at the End of the Universe.

Meanwhile, a series of six tv shows of Hitch Hiker was made by the BBC, and first broadcast in January, 1981. This was based more or less on the first six radio episodes (in other words, the book was called The Hitch Hiker's Guide to the Galaxy and the second half of the book called The Restaurant at the End of the Universe).

In the summer of 1982 a third Hitch Hiker book was published in England, called Life, the Universe and Everything. This was not based on anything already heard or seen on radio or television. In fact it flatly contradicted episodes 7, 8, 9, 10, 11 and 12 of the radio series. These episodes, you will remember, had already been incorporated in revised form in the book called The Restaurant at the End of the Universe.

Many people are increasingly of the opinion that the impending demolition of the planet Earth will clear away a lot of confusion.

In case of doubt, confusion or alarm, touch this panel.



At times of stress it is often reassuring to make physical contact with friendly objects. This panel is your friend.



ORIGINAL
RECORDS

SIDE ONE

33 $\frac{1}{3}$ RPM

ORA 42

© & © 1979
Original
Records Ltd.

THE HITCH-HIKER'S GUIDE TO THE GALAXY
by Douglas Adams

1. JOURNEY OF THE SORCERER (B. Leaden) 1.12
2. THE GUIDE SPEAKS (music: T. Souster 1.40) 3.04
3. NONE AT ALL (music: T. Souster, 0.59) 1.42
4. GARGLEBLASTER SONATA (music: T. Souster, 1.08) 2.17
5. I DON'T LIKE THURSDAYS (music: T. Souster, 0.43) 5.58
6. VOGON CONSTRUCTOR FLEETS (music: P. Kingsland, 0.46) 3.34
7. THE BABEL FISH (music: P. Kingsland, 1.48) 2.50
8. MICTURATIONS OF A VOGON (music: T. Souster, 1.13) 3.09

Produced by Geoffrey Perkins
(2)-(8) Original Music Ltd.
All words by Douglas Adams
(1) Warner Bros. Music Ltd.

ALL RIGHTS OF THE MANUFACTURER AND OF THE OWNER OF THE RECORDED WORK RESERVED · UNAUTHORISED PUBLIC PERFORMANCE BROADCASTING AND COPYING OF THIS RECORD PROHIBITED.

ORIGINAL
RECORDS

SIDE THREE

33 $\frac{1}{3}$ RPM

ORA 42

© & © 1979
Original
Records Ltd.

THE HITCH-HIKER'S GUIDE TO THE GALAXY
by Douglas Adams

1. YORE KIND OF MUSIC (music: T. Souster, 2.23) 3.50
2. CONSOLATION No. 1 (music: T. Souster 0.58) 1.00
3. OUT TO LUNCH (music: P. Kingsland, 1.20) 2.56
4. CONSOLATION No. 2 (music: T. Souster, 0.25) 1.51
5. WHALE SONG No. 1 (music: T. Souster, 0.35) 2.23
6. WHALE SONG No. 2 (music: T. Souster, 0.58) 2.00
7. PINK PLANET (music: T. Souster, 0.58) 2.00
8. BIRO GYRO (music: T. Souster, 2.40) 2.40
9. DOUBLE SUNSET (music: T. Souster, 0.48) 3.04
10. THE DOLPHINS' FAREWELL (music: T. Souster, 1.24) 1.43
11. FACTORY FLOOR (music: T. Souster, 0.11) 0.31

Produced by Geoffrey Perkins
(1)-(11) Original Music Ltd.
All words by Douglas Adams

ALL RIGHTS OF THE MANUFACTURER AND OF THE OWNER OF THE RECORDED WORK RESERVED · UNAUTHORISED PUBLIC PERFORMANCE BROADCASTING AND COPYING OF THIS RECORD PROHIBITED.

ORIGINAL
RECORDS

SIDE TWO

33 $\frac{1}{3}$ RPM

ORA 42

© & © 1979
Original
Records Ltd.

THE HITCH-HIKER'S GUIDE TO THE GALAXY
by Douglas Adams

1. A SHORT HISTORY OF THE EARTH (music: T. Souster, 2.02) 3.05
2. THE BIG ONE (music: T. Souster 1.51) 1:51
3. UNEASE BY THE SEA (music: T. Souster, 2.20) 2.20
4. HEART OF GOLD (music: T. Souster, 0.30) 0.47
5. INFINITELY IMPROBABLE (music: T. Souster, 2.08) 4.01
6. SONG OF THE MINDLESS JERKS (music: T. Souster, 0.57) 3.50
7. WAVEBAND ON THE RUN (music: P. Kingsland, 1.48) 2.50

Produced by Geoffrey Perkins
(1)-(7) Original Music Ltd.
All words by Douglas Adams

ALL RIGHTS OF THE MANUFACTURER AND OF THE OWNER OF THE RECORDED WORK RESERVED · UNAUTHORISED PUBLIC PERFORMANCE BROADCASTING AND COPYING OF THIS RECORD PROHIBITED.

ORIGINAL
RECORDS

SIDE FOUR

33 $\frac{1}{3}$ RPM

ORA 42

© & © 1979
Original
Records Ltd.

THE HITCH-HIKER'S GUIDE TO THE GALAXY
by Douglas Adams

1. THE EARTH, Mk 2 2.28
2. TELL US WHY (music: T. Souster 1.15) 5.13
3. AUBADE (music: T. Souster, 0.21) 2.44
4. THE ANSWER (music: T. Souster, 0.12) 1.35
5. THE MESSIAH (music: T. Souster, 1.07) 3.28
6. IS THERE A LIFESTYLE AFTER DEATH (music: T. Souster, 2.25) 6.55
7. ARMS OF THE LAW 3.14
8. JOURNEY'S END (JOURNEY OF THE SORCERER (B. Leaden) 1.17

Produced by Geoffrey Perkins
(1)-(7) Original Music Ltd.
All words by Douglas Adams
(8) Warner Bros. Music Ltd.

ALL RIGHTS OF THE MANUFACTURER AND OF THE OWNER OF THE RECORDED WORK RESERVED · UNAUTHORISED PUBLIC PERFORMANCE BROADCASTING AND COPYING OF THIS RECORD PROHIBITED.